

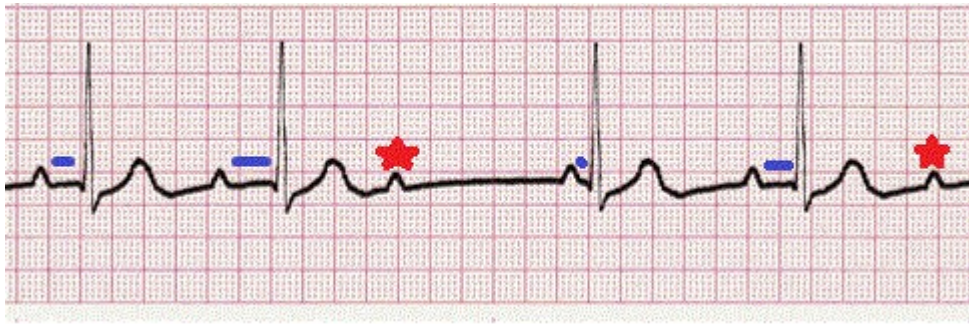
# Heart Blocks

## First Degree AV Block



If Q is always far from P, then you have a 1<sup>st</sup> degree.

## Second Degree AV Block Type I – Wenkebach (Mobitz I)



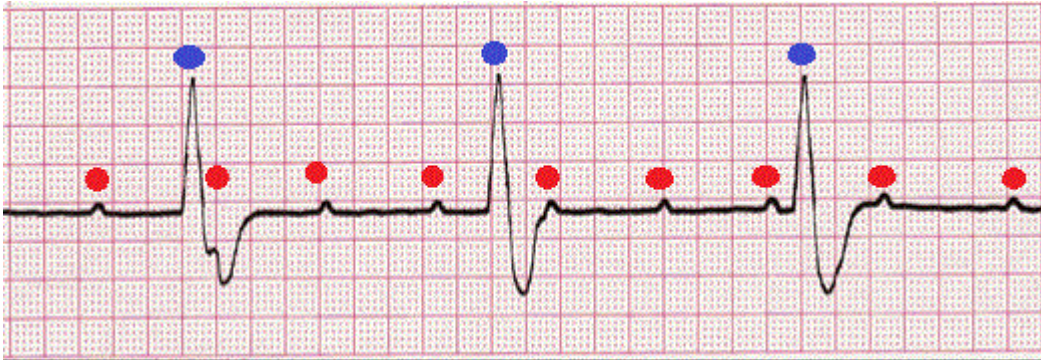
Longer, longer, dropped, then you have a Wenkebach.

## Second Degree AV Block Type II – Mobitz II



If some beats just don't go through, then you have a Mobitz II

## Third Degree AV Block – Complete Heart Block



**If Q and P just don't agree, then you have a Type III**