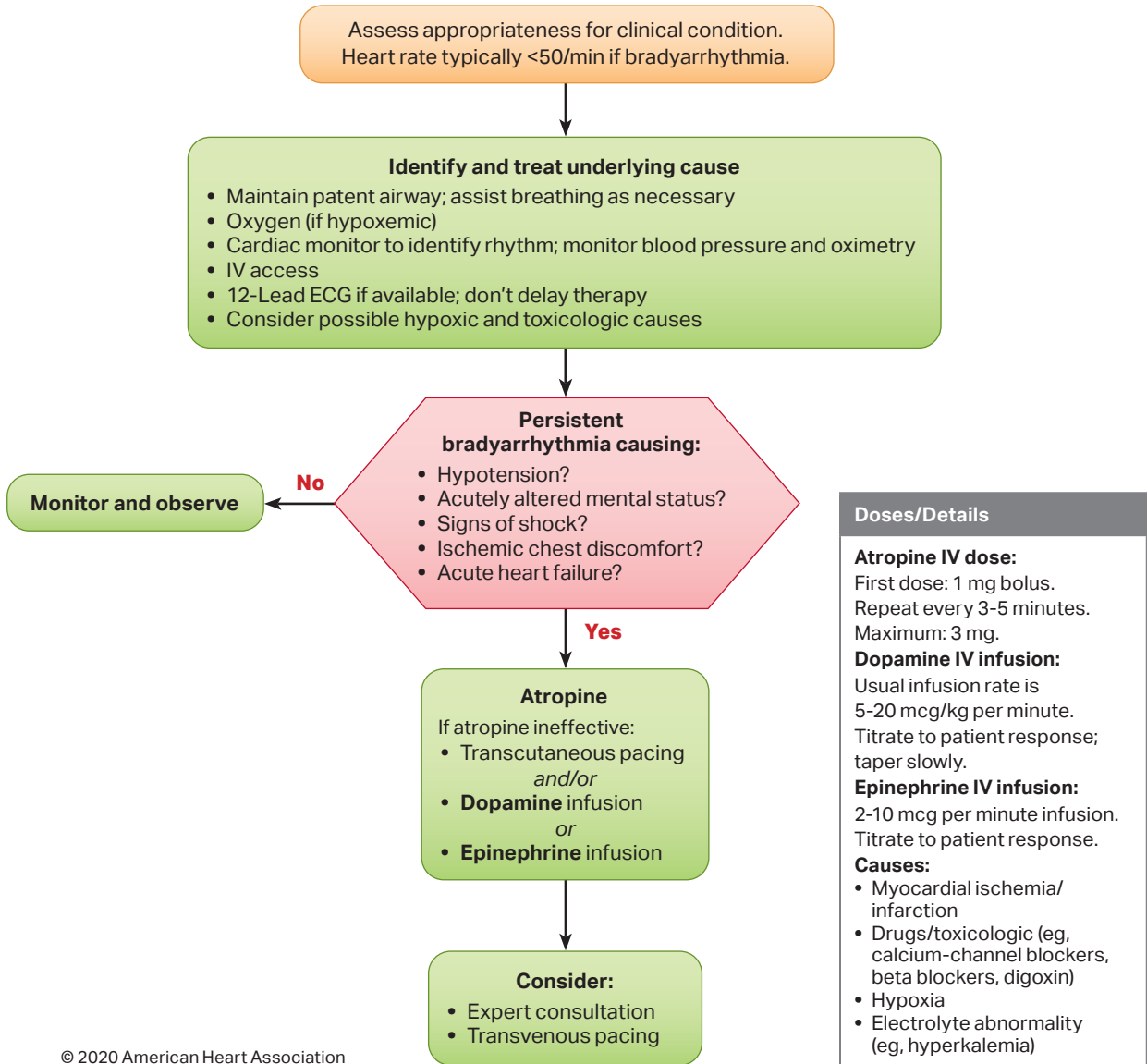
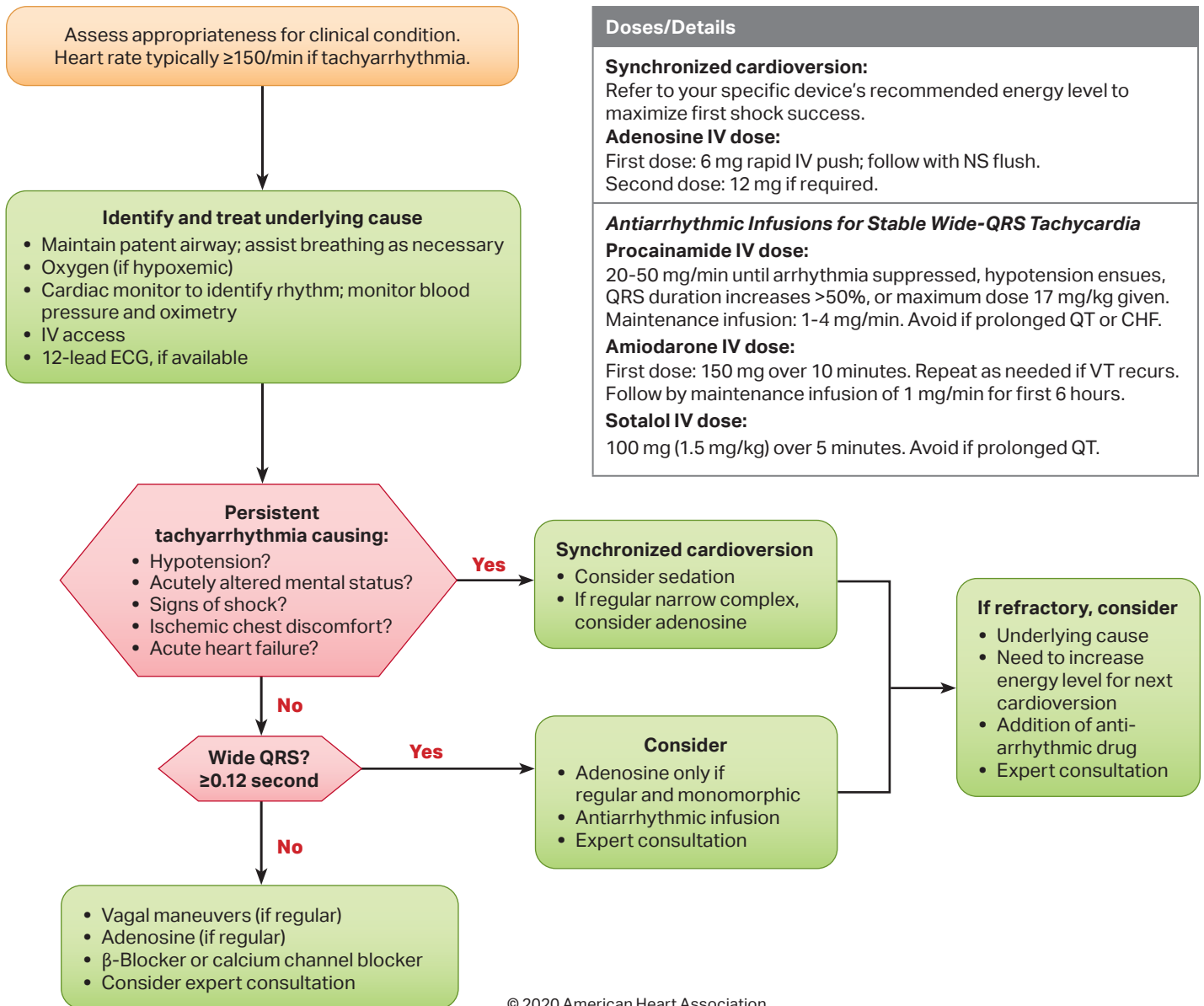


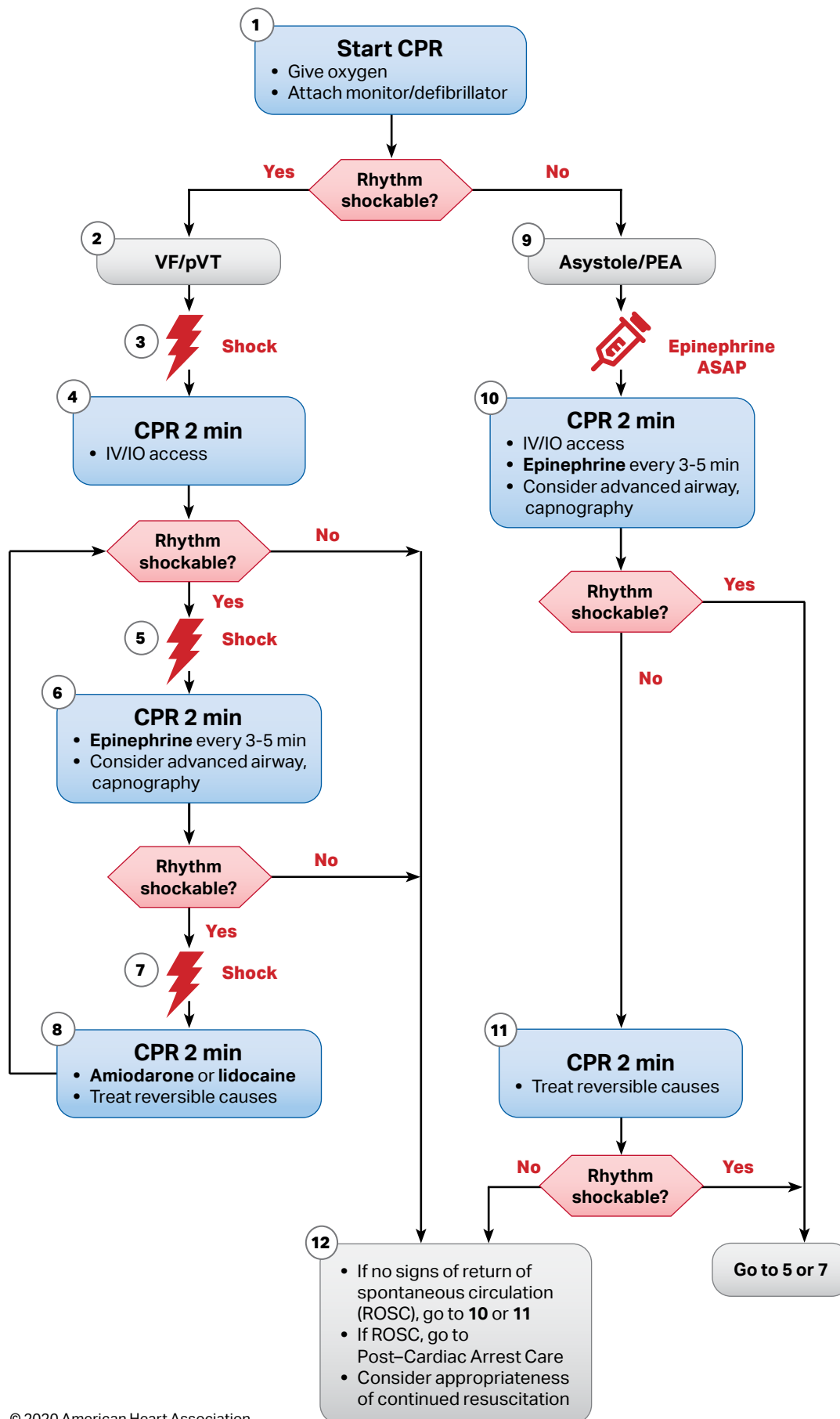
Adult Bradycardia Algorithm



Adult Tachycardia With a Pulse Algorithm

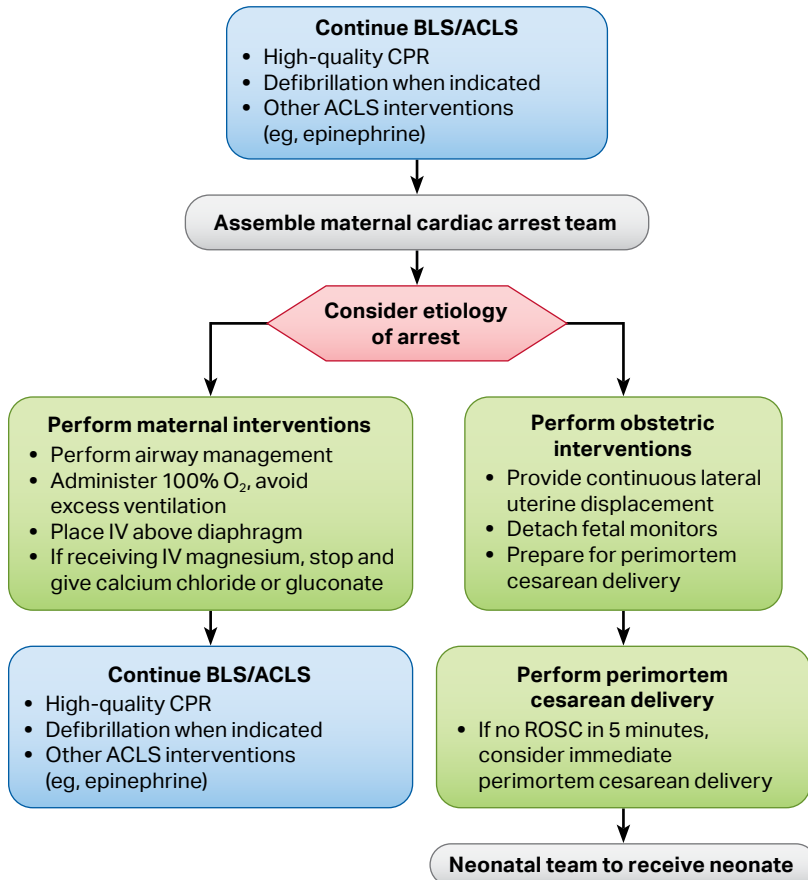


Adult Cardiac Arrest Algorithm



CPR Quality
<ul style="list-style-type: none"> • Push hard (at least 2 inches [5 cm]) and fast (100-120/min) and allow complete chest recoil. • Minimize interruptions in compressions. • Avoid excessive ventilation. • Change compressor every 2 minutes, or sooner if fatigued. • If no advanced airway, 30:2 compression-ventilation ratio, or 1 breath every 6 seconds. • Quantitative waveform capnography <ul style="list-style-type: none"> – If PETCO₂ is low or decreasing, reassess CPR quality.
Shock Energy for Defibrillation
<ul style="list-style-type: none"> • Biphasic: Manufacturer recommendation (eg, initial dose of 120-200 J); if unknown, use maximum available. Second and subsequent doses should be equivalent, and higher doses may be considered. • Monophasic: 360 J
Drug Therapy
<ul style="list-style-type: none"> • Epinephrine IV/IO dose: 1 mg every 3-5 minutes • Amiodarone IV/IO dose: First dose: 300 mg bolus. Second dose: 150 mg. or • Lidocaine IV/IO dose: First dose: 1-1.5 mg/kg. Second dose: 0.5-0.75 mg/kg.
Advanced Airway
<ul style="list-style-type: none"> • Endotracheal intubation or supraglottic advanced airway • Waveform capnography or capnometry to confirm and monitor ET tube placement • Once advanced airway in place, give 1 breath every 6 seconds (10 breaths/min) with continuous chest compressions
Return of Spontaneous Circulation (ROSC)
<ul style="list-style-type: none"> • Pulse and blood pressure • Abrupt sustained increase in PETCO₂ (typically ≥40 mm Hg) • Spontaneous arterial pressure waves with intra-arterial monitoring
Reversible Causes
<ul style="list-style-type: none"> • Hypovolemia • Hypoxia • Hydrogen ion (acidosis) • Hypo-/hyperkalemia • Hypothermia • Tension pneumothorax • Tamponade, cardiac • Toxins • Thrombosis, pulmonary • Thrombosis, coronary

Cardiac Arrest in Pregnancy In-Hospital ACLS Algorithm



Maternal Cardiac Arrest

- Team planning should be done in collaboration with the obstetric, neonatal, emergency, anesthesiology, intensive care, and cardiac arrest services.
- Priorities for pregnant women in cardiac arrest should include provision of high-quality CPR and relief of aortocaval compression with lateral uterine displacement.
- The goal of perimortem cesarean delivery is to improve maternal and fetal outcomes.
- Ideally, perform perimortem cesarean delivery in 5 minutes, depending on provider resources and skill sets.

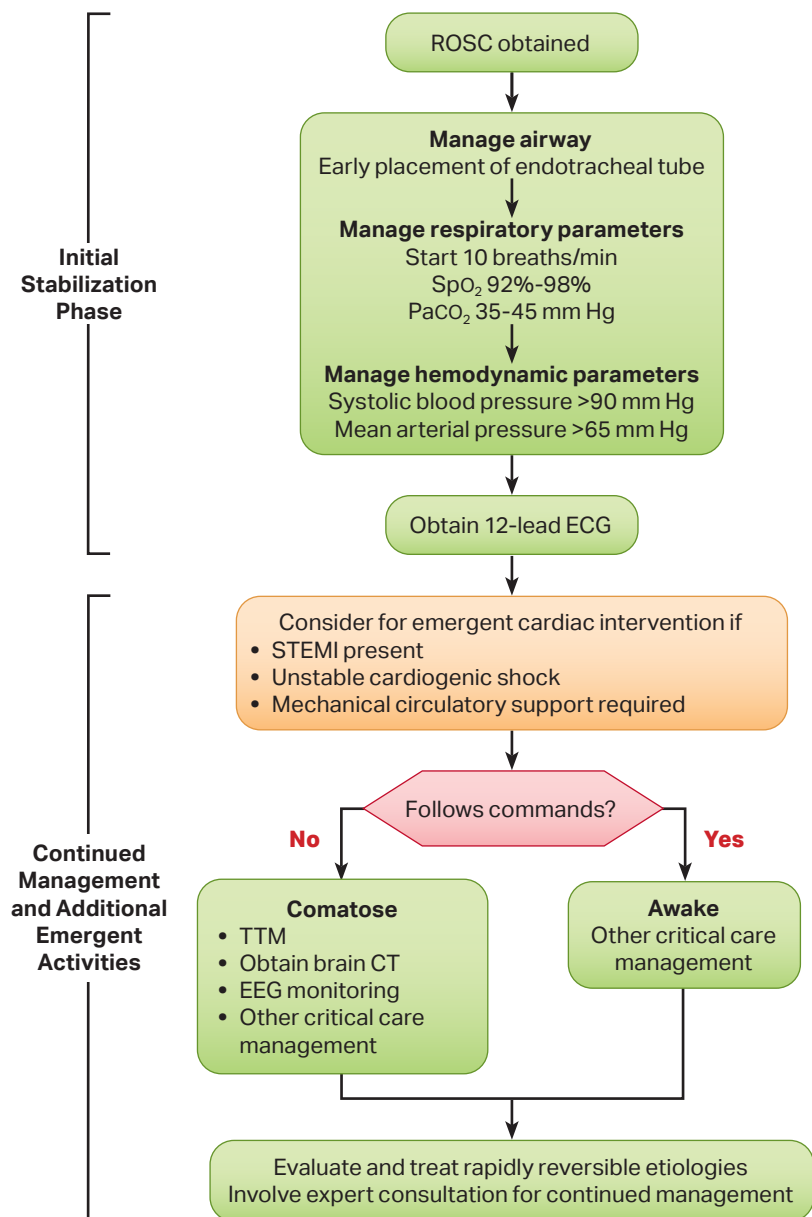
Advanced Airway

- In pregnancy, a difficult airway is common. Use the most experienced provider.
- Provide endotracheal intubation or supraglottic advanced airway.
- Perform waveform capnography or capnometry to confirm and monitor ET tube placement.
- Once advanced airway is in place, give 1 breath every 6 seconds (10 breaths/min) with continuous chest compressions.

Potential Etiology of Maternal Cardiac Arrest

- A** Anesthetic complications
- B** Bleeding
- C** Cardiovascular
- D** Drugs
- E** Embolic
- F** Fever
- G** General nonobstetric causes of cardiac arrest (H's and T's)
- H** Hypertension

ACLS Healthcare Provider Post-Cardiac Arrest Care Algorithm



Initial Stabilization Phase

Resuscitation is ongoing during the post-ROSC phase, and many of these activities can occur concurrently. However, if prioritization is necessary, follow these steps:

- Airway management: Waveform capnography or capnometry to confirm and monitor endotracheal tube placement
- Manage respiratory parameters: Titrate FiO_2 for SpO_2 92%-98%; start at 10 breaths/min; titrate to $PaCO_2$ of 35-45 mm Hg
- Manage hemodynamic parameters: Administer crystalloid and/or vasopressor or inotrope for goal systolic blood pressure >90 mm Hg or mean arterial pressure >65 mm Hg

Continued Management and Additional Emergent Activities

These evaluations should be done concurrently so that decisions on targeted temperature management (TTM) receive high priority as cardiac interventions.

- Emergent cardiac intervention: Early evaluation of 12-lead electrocardiogram (ECG); consider hemodynamics for decision on cardiac intervention
- TTM: If patient is not following commands, start TTM as soon as possible; begin at 32-36°C for 24 hours by using a cooling device with feedback loop
- Other critical care management
 - Continuously monitor core temperature (esophageal, rectal, bladder)
 - Maintain normoxia, normocapnia, euglycemia
 - Provide continuous or intermittent electroencephalogram (EEG) monitoring
 - Provide lung-protective ventilation

H's and T's

- Hypovolemia
- Hypoxia
- Hydrogen ion (acidosis)
- Hypokalemia/hyperkalemia
- Hypothermia
- Tension pneumothorax
- Tamponade, cardiac
- Toxins
- Thrombosis, pulmonary
- Thrombosis, coronary

Opioid-Associated Emergency for Healthcare Providers Algorithm

